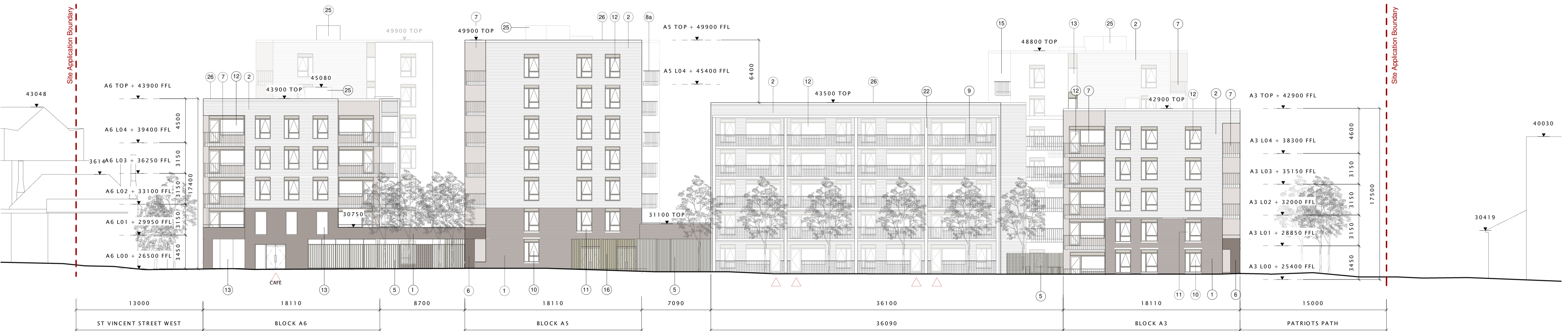


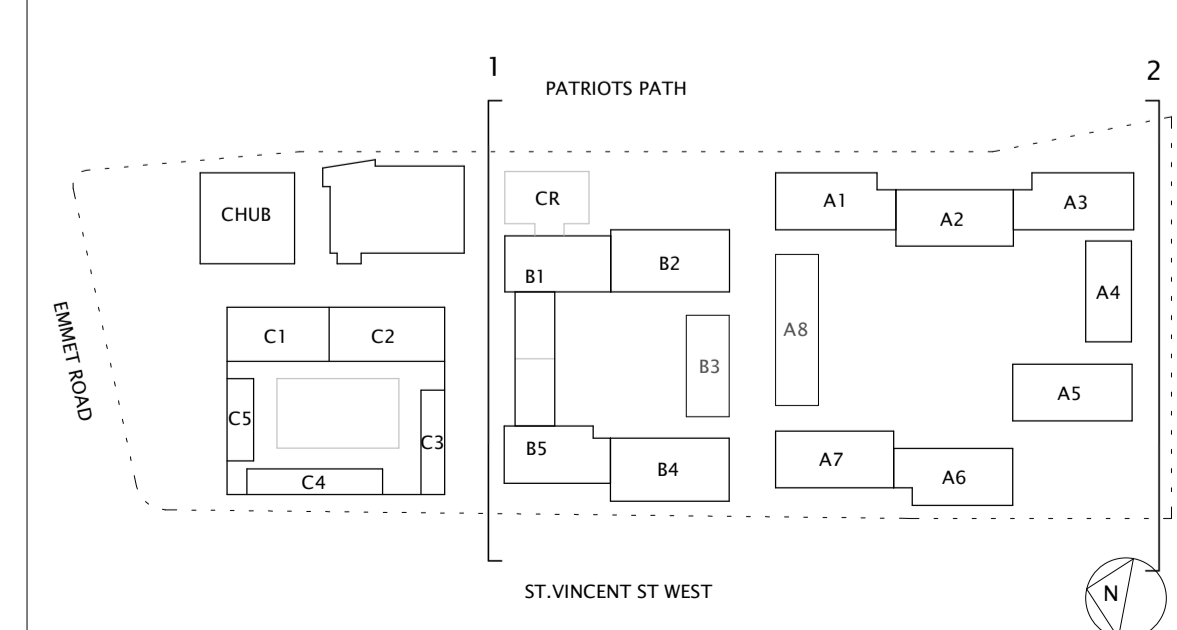


1 Main Residential North Elevation (To New Shared Street)
1 : 200



2 Main Residential South Elevation (To Goldenbridge Cemetery)
1 : 200

revision	drawn	checked	date	no.



- Facade Materials Key Notes: To be read in conjunction with the Architectural Design Statement; Refer to A2 series plan drawings for roof types references**
- 1 Grey clay brickwork
 - 2 White clay brickwork
 - 3 Mid grey clay brickwork
 - 4 Coloured glazed terracotta tile finish or similar
 - 5 Galvanised steel or timber screen with integrated access sliding and/or swing gates as indicated.
 - 6 White precast concrete cladding panel or similar.
 - 7 Recessed balcony with flat bar galvanised metal railings, timber top rail, fascia and soffit with aluminium finish
 - 8a Projecting balcony with flat bar galvanised metal railings, fascia and soffit with aluminium finish
 - 8b Aluminium privacy screening where indicated or similar
 - 9 Gallery access structures, with flat bar galvanised metal with aluminium soffit panels, non-slip plank deck or similar
 - 10 Composite double glazed window, aluminium finish externally and timber internally, with precast concrete lintel and cill, integrated metal spandrel panel / louvre, with door where indicated.
 - 11 Composite double glazed window, aluminium finish externally, with concrete cill, integrated metal spandrel panel / louvre, with door where indicated
 - 12 Composite double glazed window, aluminium finish externally and timber internally, with metal cill, integrated metal spandrel panel / louvre, with door where indicated
 - 13 Composite double glazed window, aluminium finish externally
 - 14 Entrance window / door glazing system with precast concrete cladding panel surround or similar
 - 15 Curtain wall glazing system to staircase with door and AOV where indicated, aluminium finish
 - 16 Galvanised steel or timber screen with integrated access sliding and/or swing gates as indicated with curtain wall glazing system
 - 21 Perforated aluminium profiled screening to roof plant area
 - 22 Galvanised steel framed balcony structure
 - 23 White Render finish
 - 24 White Precast Concrete Panel with entrance signage / services
 - 25 Ventilation panel
 - 26 Dark Grey precast concrete coping
 - 28 Transparent glass panels with integrated ventilation louvres
 - 30 Selected colour glass panel
 - 34 Flat bar metal railings, with metallic coloured finish
 - 35 Perforated clay brickwork screen wall, warm grey coloured blend precast concrete bench
 - 37 Metal coping, Aluminium

NOTES:
No dimensions on this drawing are to be scaled.
All levels and dimensions on this drawing are to be checked on site. Any discrepancies on this drawing are to be reported to and verified with the architect.
This drawing is to be read in conjunction with all other application documentation and information as issued.
This is not a construction drawing, it is unsuitable for the purpose of construction and must on no account be used as such.
(* Placeholder names are used for ease of reference in the Application Documents)
This drawing is the copyright of Bucholz McEvoy Architects Ltd and may not be copied, altered, or reproduced in any form or passed to a third party without license or written consent.

PLANNING			
MAIN RESIDENTIAL ELEVATIONS – NORTH / SOUTH STREETS			
drawing no. 0318-MR-A4-05	scale 1 : 200@A1	drawn MH, JM	project no. 0318
	date SEPT 2022	checked DH, KH	revision
project EMMET ROAD MIXED-USE DEVELOPMENT, DUBLIN 8			
client DUBLIN CITY COUNCIL			
bucholzmcEvoyARCHITECTS			
UNIT C	MOUNTPLEASANT BUSINESS CENTRE	UPPER MOUNTPLEASANT AVENUE	DUBLIN 6 IRELAND
T +353 1 496 6340	F +353 1 496 6341	INFO@BMCEA.COM	WWW.BMCEA.COM